

GC 341



160278-05
5930241 OCT 2022 NI-0177-1



Contents

Symbols and illustrations	3
Abbreviations	3
Product liability.....	3
1 Safety	3
1.1 Intended use.....	3
1.2 Safety notices	4
1.3 Safety-conscious working	5
1.4 Environmentally conscious working	5
2 Description.....	5
2.1 Dimensions and overview	6
2.2 Supplied by GEZE	7
3 Work to be done before installation	7
3.1 Installing the drive	7
3.2 Safety sensor system.....	8
4 Installation.....	9
4.1 Installation without accessories.....	9
4.2 Installation with ceiling installation kit	10
4.3 Installation with mounting bracket	12
4.4 Installation with weather hood	13
4.5 Cabling	14
5 Commissioning.....	15
5.1 Adjusting the protection area with spot finder	15
5.2 Adjusting the protection area without spot finder	17
5.3 DIP switch settings.....	18
6 Last installation steps.....	20
7 Further installation situations	21
7.1 Single leaf installation.....	21
7.2 Lintel installation	22
8 Maintenance.....	22
9 Fault messages and troubleshooting	23
9.1 Fault messages	23
9.2 LED-display table.....	26
10 Technical data	27
11 Accessories/spare parts	28

Symbols and illustrations

Warning notices

In these instructions, warnings are used to warn against material damage and injuries.

- ▶ Always read and observe these warning notices.
- ▶ Observe all measures marked with the warning symbol and warning word.

Abbreviations

AIR	Active infrared
Main closing edge	Main closing edge







Product liability

In accordance with the liability of manufacturers for their products as defined in the German "Produkthaftungsgesetz" (Product Liability Act), the information contained in these instructions (product information and proper use, misuse, product performance, product maintenance, obligations to provide information and instructions) is to be observed. Failure to comply releases the manufacturer from his statutory liability.

1 Safety

1.1 Intended use

The safety sensor GC 341 may only be used to protect automatic sliding doors and curved sliding doors with GEZE drives. The minimum object size corresponds to the reference object CA in accordance with DIN 18650 or DIN EN 16005 both upright and lying down. The sensor can protect people from being struck by and jammed in automatic sliding doors.

			
GC 341	 (in the direction of emergency exit)		

1.2 Safety notices

- The mandatory installation, maintenance and repair work must be performed by properly trained personnel authorised by GEZE. Any attempts at repairs by unauthorised personnel cancel the factory guarantee.
- Only operate the device with safety extra-low voltage (SELV) with electrically protective separation.
- The country-specific laws and regulations are to be observed during safety-related tests.
- Make sure that the cover of the drive is fitted correctly and earthed.
- If unauthorised changes are made to the system, GEZE cannot be held liable in any way whatsoever for any resulting damage, and the approval for use on escape and rescue routes ceases.
- GEZE does not accept any warranty for combinations with third-party products.
- Only original GEZE parts may be used for repair and maintenance work.
- Observe the latest versions of directives, standards and country-specific regulations, in particular:
 - ASR A1.7 "Doors and gates"
 - DIN 18650 "Building hardware – Powered pedestrian doors"
 - DIN EN 16005 "Power operated pedestrian doorsets – Safety in use – Requirements and test methods"
 - Accident-prevention regulations, especially BGV A1 "General regulations" and BGV A2 "Electrical installations and equipment"
- The risk assessment and installation of the sensor and the door system in compliance with national and international regulations and door safety standards are the responsibility of the door manufacturer.
- Any uses of the device other than those described in this manual do not correspond to the intended use and cannot be guaranteed by the manufacturer.

1.3 Safety-conscious working

- Secure workplace against unauthorised entry.
- Watch the swivelling range of long system parts.
- Secure the cover/drive panels against falling.
- Attach safety stickers to glass leaves.
- Danger of injury with opened drive. Hair, clothing, cables, etc. can be drawn in by rotating parts.
- Danger of injury caused by unsecured crushing, impact, drawing-in or shearing spots.
- Danger of injury due to glass breakage.
- Danger of injury due to sharp edges in the drive.
- Danger of injury by freely moving parts during installation.

1.4 Environmentally conscious working

- When disposing of the sensor, separate the different materials and have them recycled.

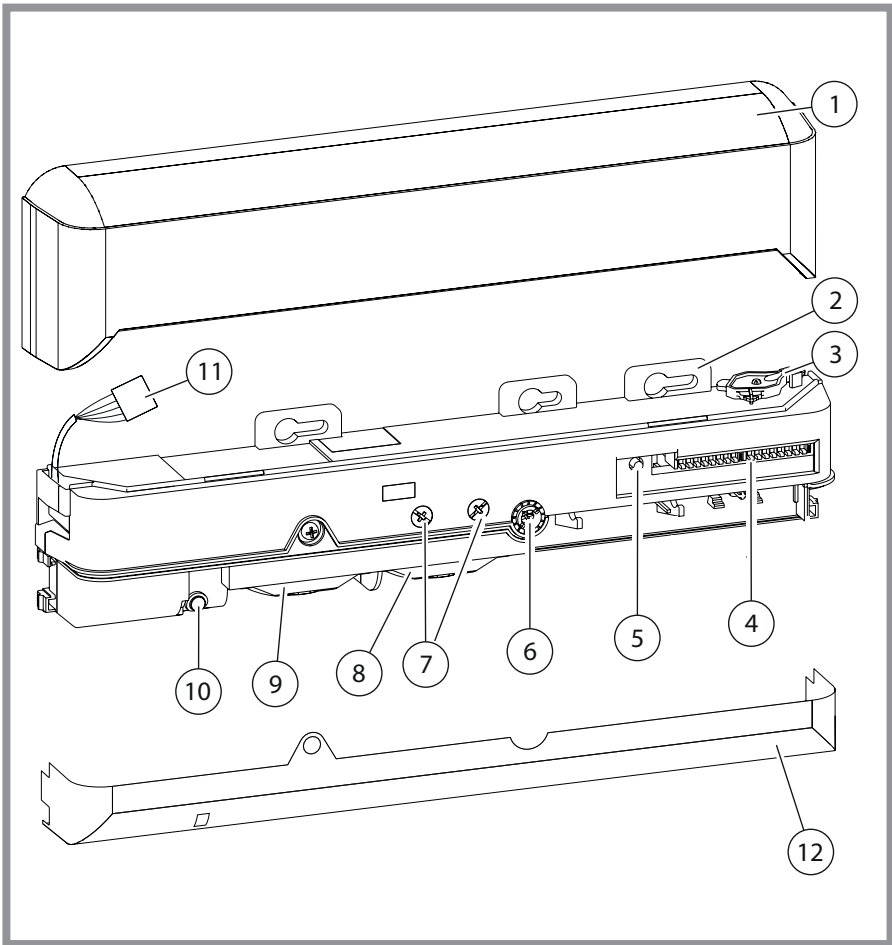
2 Description

The safety sensor GC 341 has an infrared field for protection. It is not possible for several systems to influence each other and result in a hazard. Unintentional stop signals are possible where detectors are mounted next to one another as their infrared measuring ranges overlap and each sensor could activate the other. This influence is kept to a minimum by different frequency settings.

ID no.:

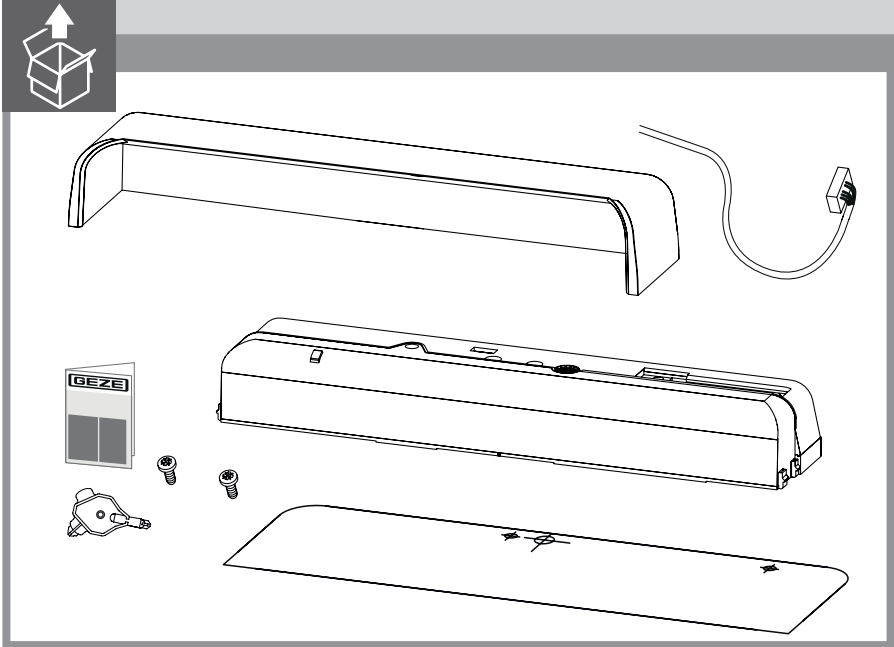
Variant	GC 341
Black	160285

2.1 Dimensions and overview



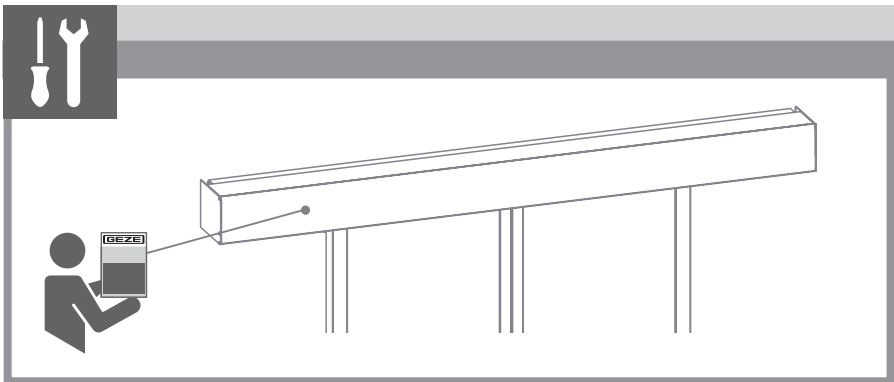
- | | | | |
|---|----------------------------------|----|-------------------------|
| 1 | Cover | 7 | Width adjustment screws |
| 2 | Suspension | 8 | AIR transmitter |
| 3 | Adjustment tool | 9 | AIR receiver |
| 4 | DIP switch | 10 | LED display |
| 5 | Function switch | 11 | Connector plug |
| 6 | Adjustment screw for depth angle | 12 | Detection window |

2.2 Supplied by GEZE



3 Work to be done before installation

3.1 Installing the drive



► Make sure that the cover of the drive is fitted correctly and earthed.

3.2 Safety sensor system

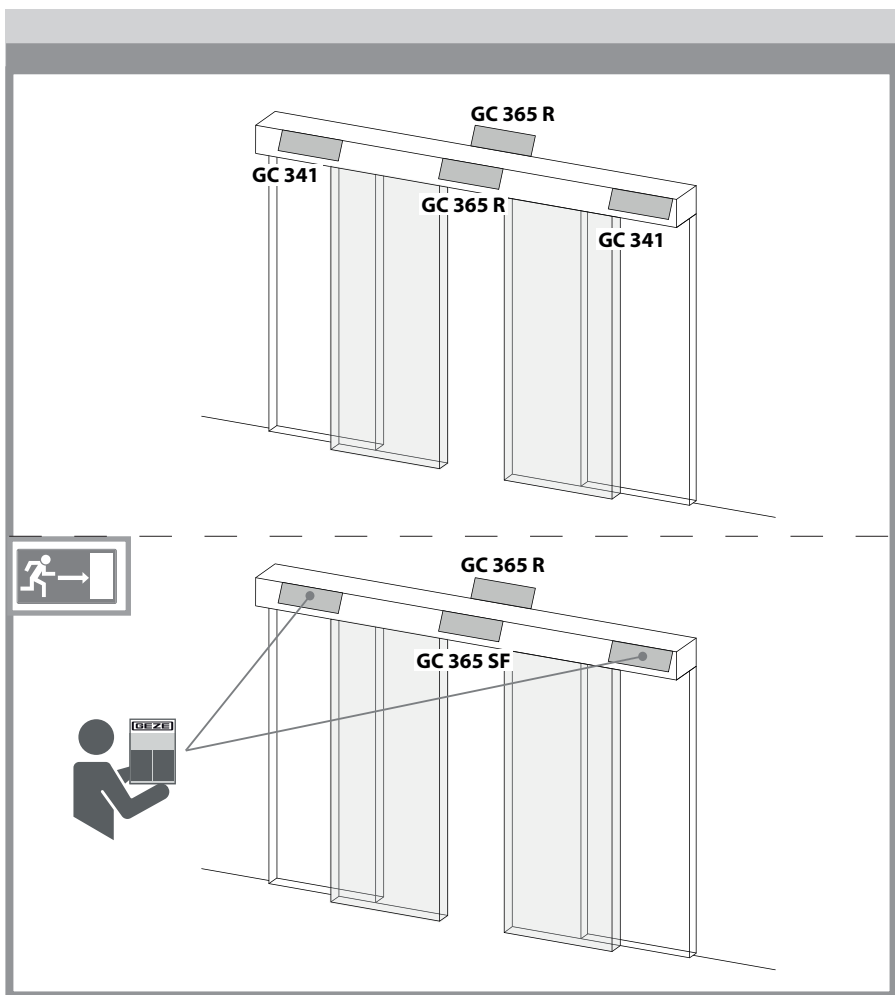
One combined detector per passage direction is installed on automatic sliding doors. The safety sensor GC 341 may be required in addition for larger opening widths.

- ▶ See installation instructions GC 365.



For escape and rescue routes:

- Use protective door leaf if necessary. Heed standards.

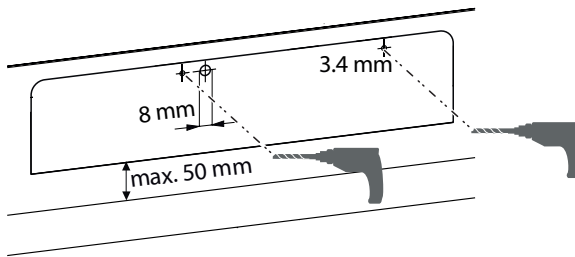
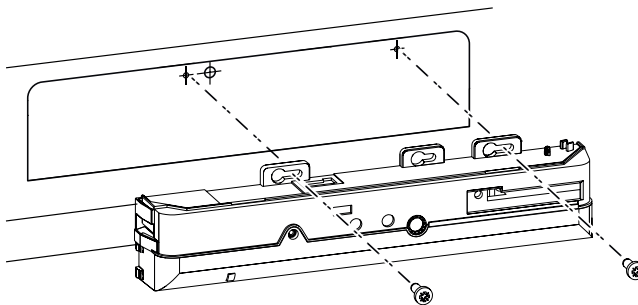


4 Installation

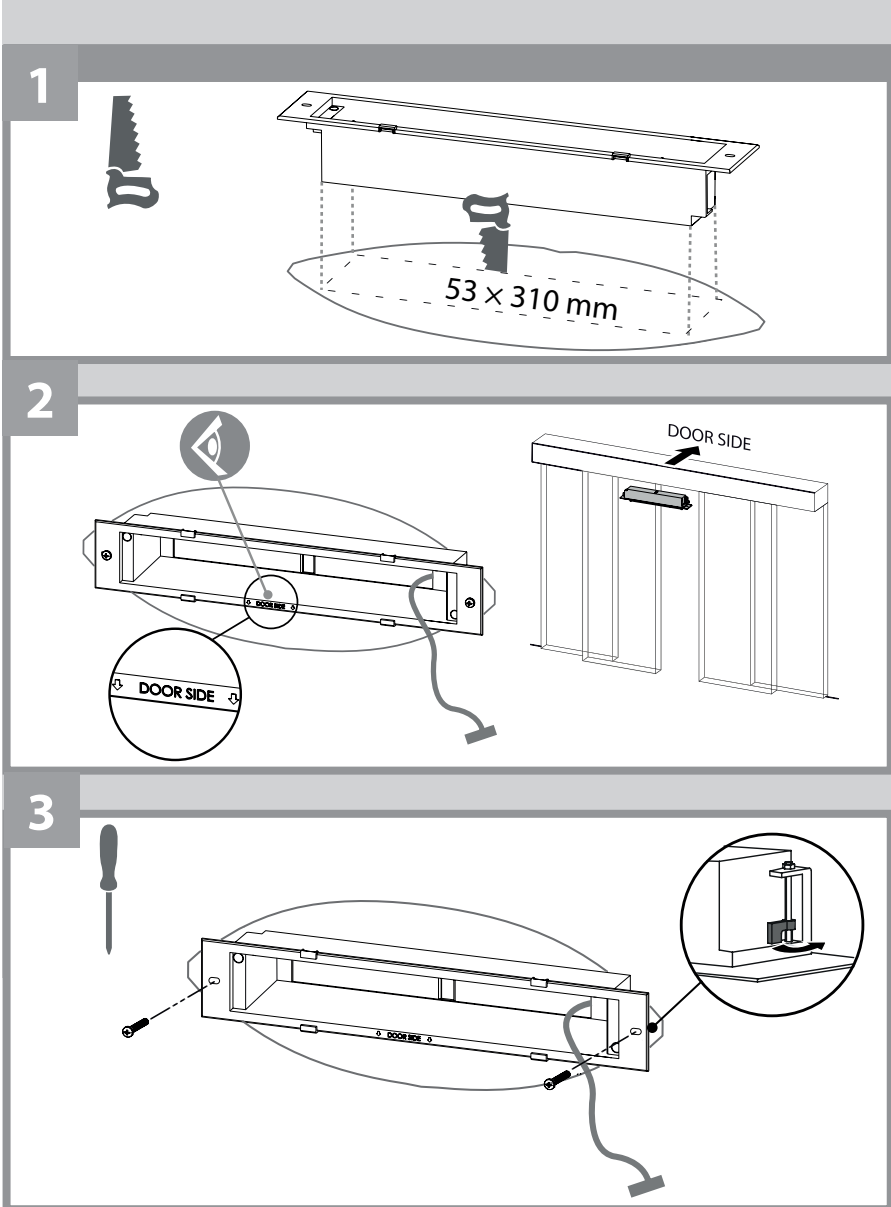
4.1 Installation without accessories

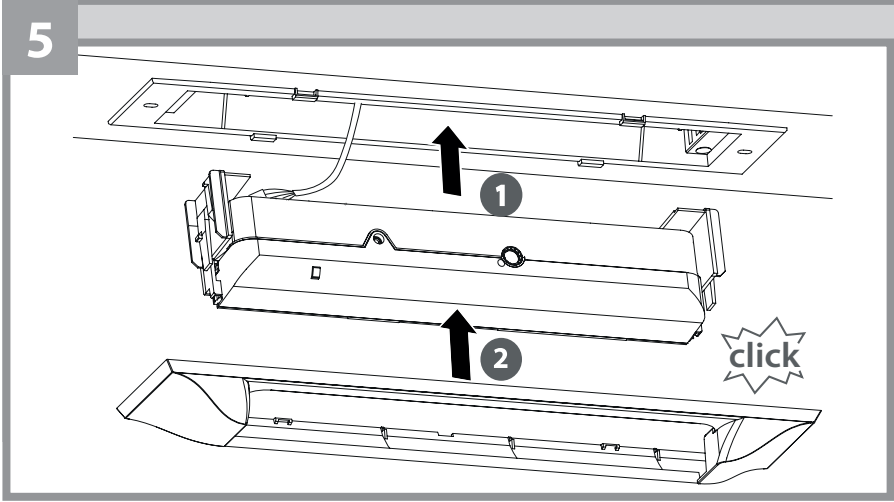
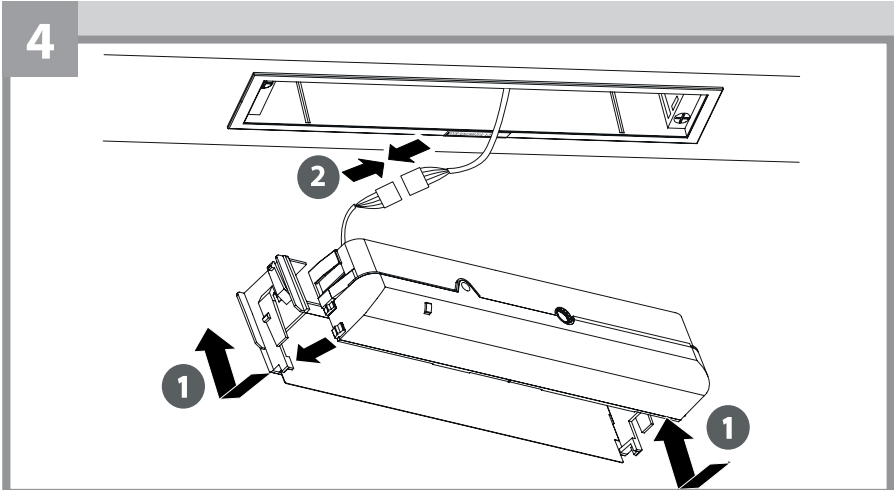


- ▶ Avoid extreme vibrations.
- ▶ Do not cover the sensor.
- ▶ Keep away from fluorescent lamps.
- ▶ Keep away from moving objects.
- ▶ Avoid highly reflective objects in the infrared range.
- ▶ Keep a distance of at least 200 mm away from lights, signs or hot air curtains.
- ▶ When using the installation bracket, ensure that the AIR viewing field is not covered by the drive or the reveal.

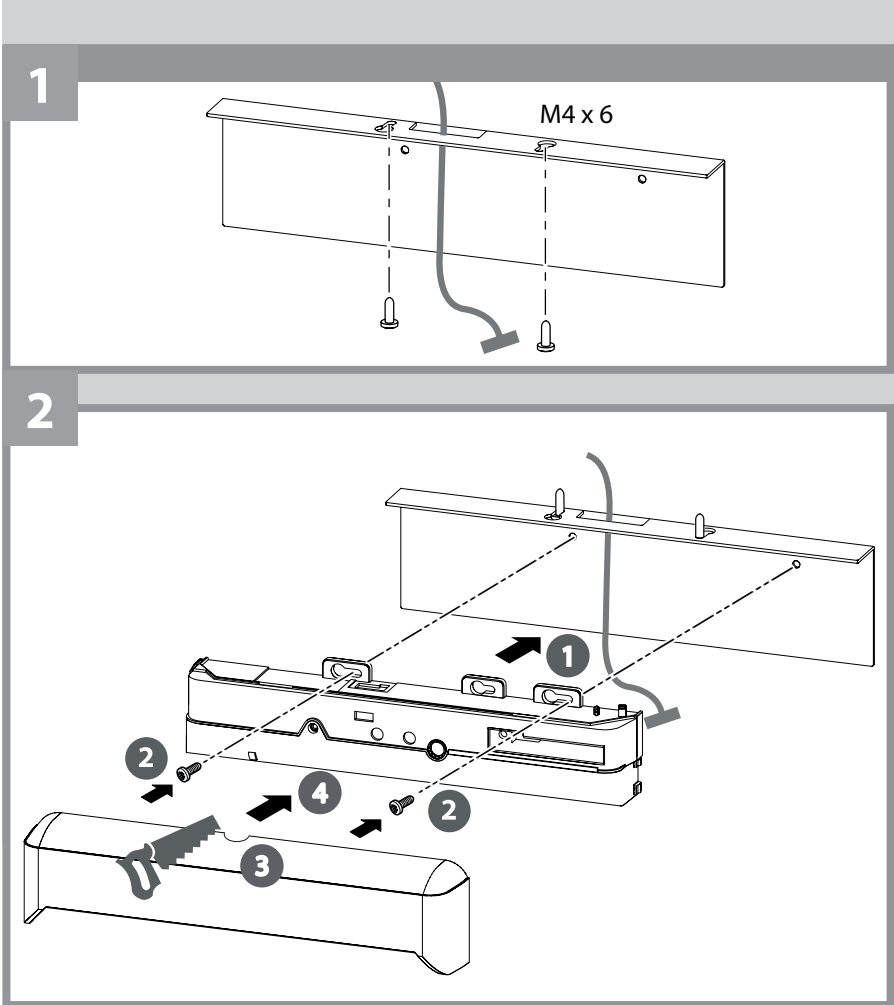
1**2**

4.2 Installation with ceiling installation kit

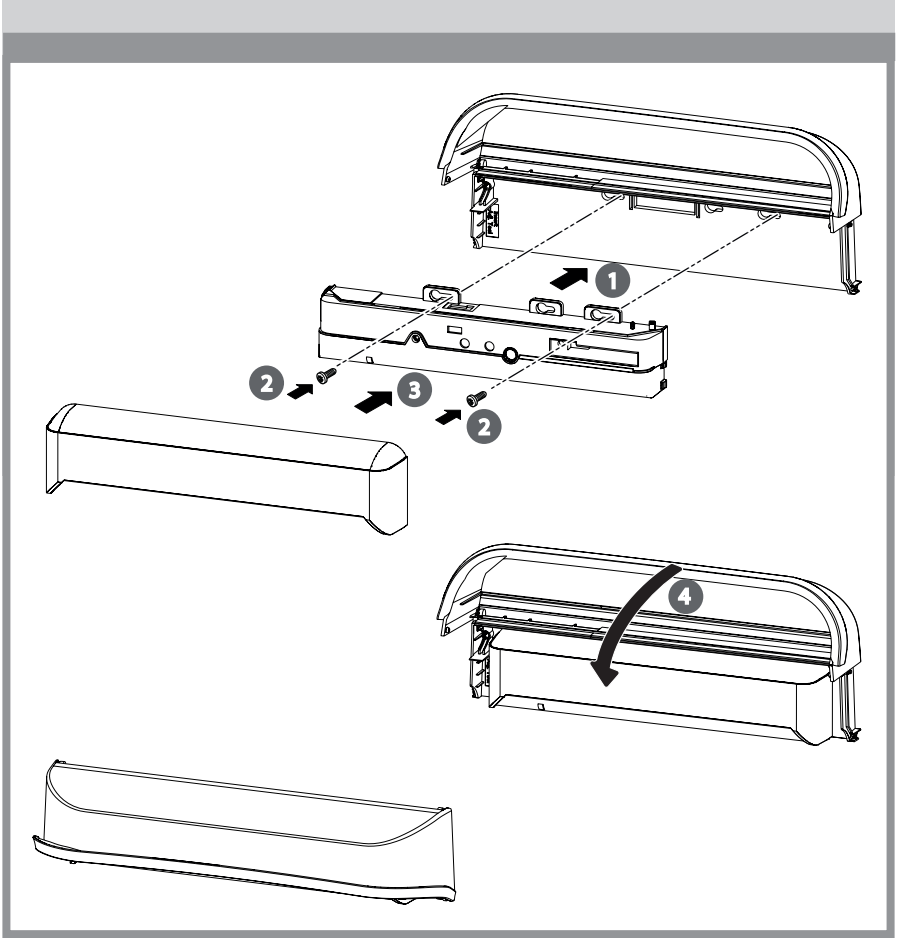




4.3 Installation with mounting bracket

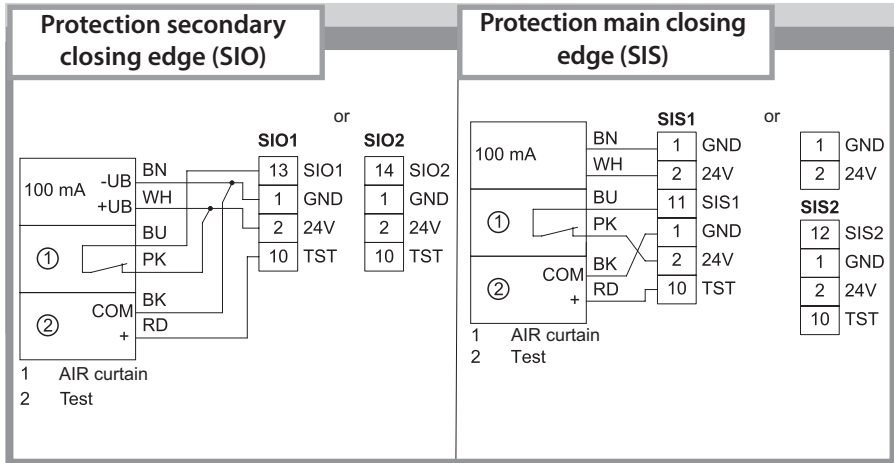


4.4 Installation with weather hood

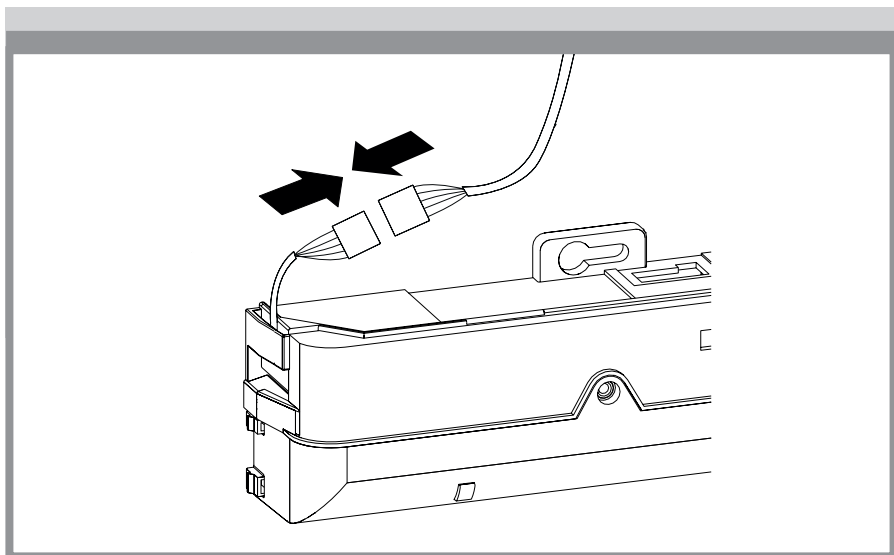


4.5 Cabling

- ▶ Connect the cable to the door control.
- ▶ Heed wiring diagrams for the sliding door drives.



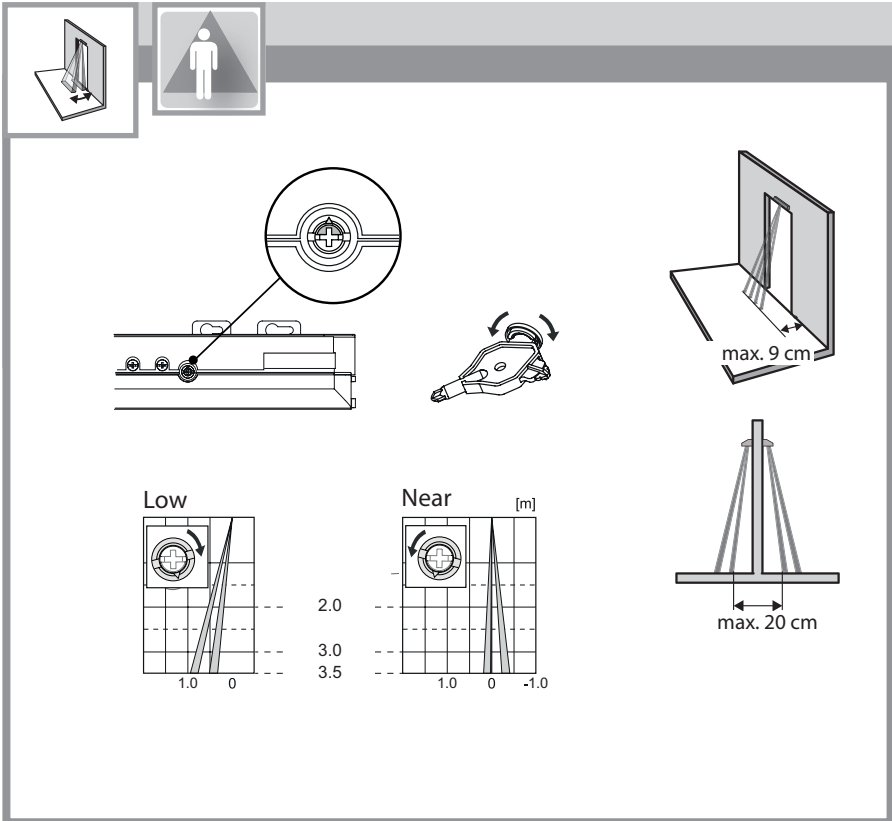
- ▶ Connect the sensor to the power supply.

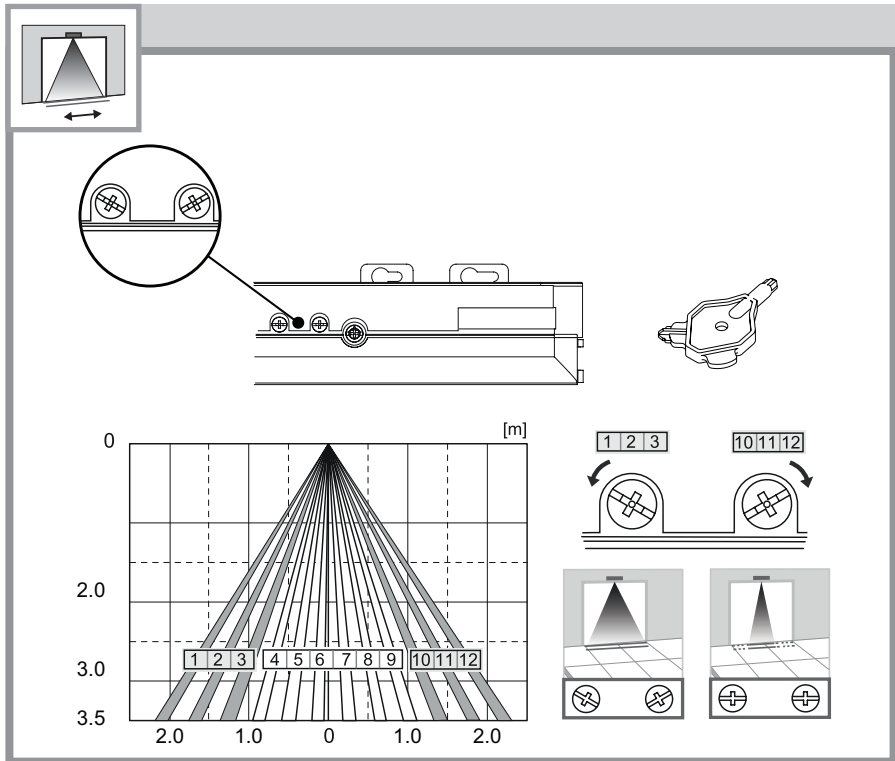


5 Commissioning

5.1 Adjusting the protection area with spot finder

i The position of the AIR curtain in relation to the door can be checked using a spot finder.





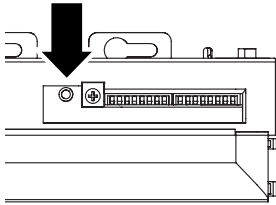
- Make sure that the whole width of the door is covered.
- Test the width of the required area using a piece of paper (DIN A4), since the spot finder detects over the whole emission area.
- Ensure that the width adjustment screw audibly latches into place.

Sensor adjustment

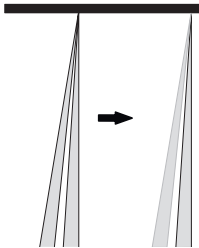
Installation height	Detection width
2.00 m	2.41 m
2.20 m	2.65 m
2.50 m	3.00 m
3.00 m	3.60 m
3.50 m	3.60 m

5.2 Adjusting the protection area without spot finder

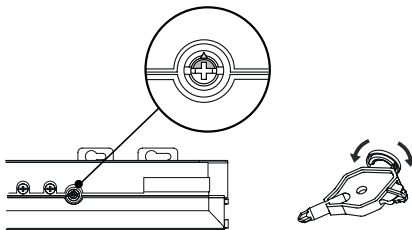
- ▶ Press the function switch for 5 s to activate service mode.



The LED display starts to flash yellow/green. The max. AIR time is automatically set to 2 s.



- ▶ Move out of the AIR field.
- ▶ Reduce the angle of the AIR field until the LED display flashes red quickly when it detects the moving door leaf.



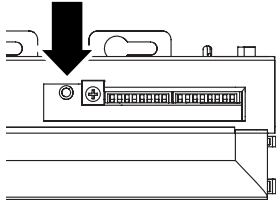
- ▶ Increase the angle of the AIR field by 2°. The distance between the AIR field and the door leaf is set up.







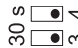



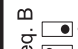
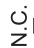







- ▶ Press the function switch for 2 s to deactivate service mode. If no entry is made, the service mode is deactivated automatically after 15 min.

5.3 DIP switch settings

- ▶ Only change the switch settings when the power supply is on.
- ▶ After changing the DIP switches, press the function switch for 2 s (until the LED goes out). The teach-in process starts automatically.
- ▶ Move out of the detection area.
- ▶ Before ending the installation, test the correct sensor installation.

**Legend for table:**

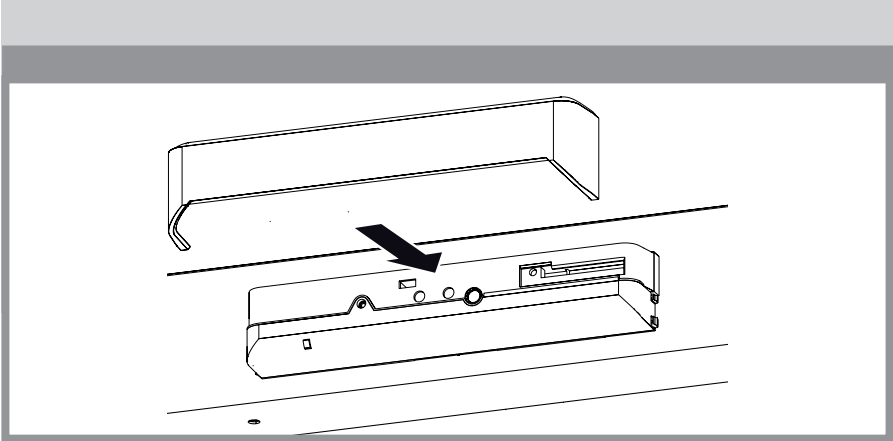
<input checked="" type="checkbox"/>	AIR settings
<input type="checkbox"/>	Other settings
<input type="checkbox"/>	Default settings

No.	Function	Setting	Comment
1	AIR: Filter	Low  1 2 2.0 - 3.0 m	Adjust the AIR: Filter depending on installation height, characteristics of the floor, setting and function test. The values in the table are reference only.
2		High  1 2 2.3 - 3.5 m	
3	Max. AIR time	Medium  1 2 2.0 - 3.0 m	Set the timer to 30 s or more. Do not enter the detection area for more than 10 s in order to enable the presence detection. * Not DIN EN 16005 / DIN 18650 conform
4		Low  1 2 3.0 - 3.5 m	
5	AIR: Frequency	30 s  3 4	Set different frequencies for adjacent or opposite sensors.
6		600 s  3 4 (Movement)*  3 4	
7	AIR: Output	Freq. A  5 6	The delay time between the test input and the AIR: Output is 10 ms. If the test input is not used with 24 V, switch DIP switch 8 to "high".
8		Freq. B  5 6	
14	Sensor Self Monitoring	N.C.  7	Testing must be activated (position "ON") for conformity with DIN 18650/DIN EN 16005.
16		N.O.  7	
16	Installation mode	High with 24 V  8	Set DIP switch 16 to "ON" to set the 1 st row. After the row has been set, set DIP switch 16 to "OFF". In installation mode, only the 1 st row remains active and the LED display lights up yellow.
16		Low with GND  8	
14	Sensor Self Monitoring	ON  14	Set DIP switch 16 to "ON" to set the 1 st row. After the row has been set, set DIP switch 16 to "OFF". In installation mode, only the 1 st row remains active and the LED display lights up yellow.
16		OFF  14	
16	Installation mode	ON  16	Set DIP switch 16 to "ON" to set the 1 st row. After the row has been set, set DIP switch 16 to "OFF". In installation mode, only the 1 st row remains active and the LED display lights up yellow.
16		OFF  16	

6 Last installation steps



- ▶ Before completing the installation, check the sensor for correct function.

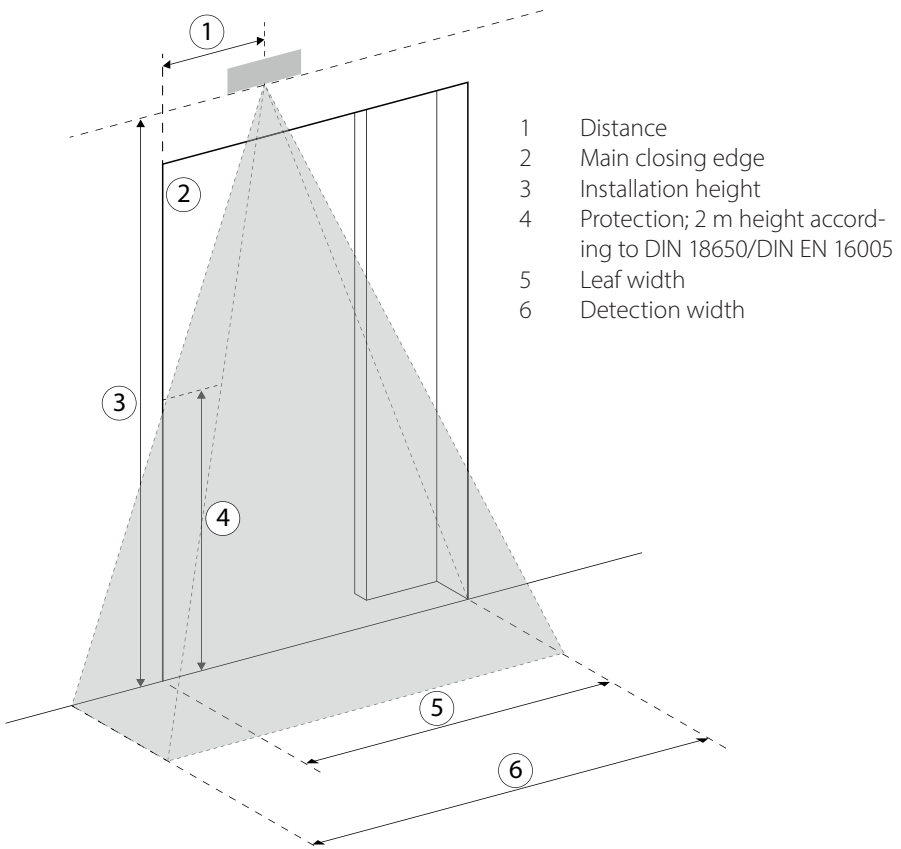


7 Further installation situations

7.1 Single leaf installation

Installation height (in mm)	Distance between detector and main closing edge (in mm)	Max. leaf width* (in mm)	Detection width DIN 18650/DIN EN 16005 (in mm)
2000	0	1205	2410
2200	120	1445	2650
2500	300	1800	3000
3000	600	2400	3600
3500	900	2700	3600

* When only one combined detector is used. Otherwise the safety sensor GC 341 is required for further protection.



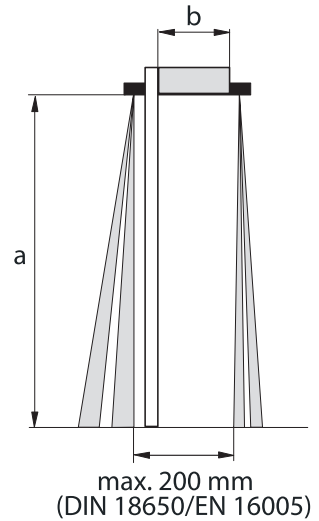
7.2 Lintel installation

According to DIN 18650/DIN EN 16005, the distance between the inner light curtains must not exceed 200 mm.



In the case of other dimensions, please contact the sales department first.

Installation height a (in mm)	Max. reveal depth b (in mm)
2000	320
2200	340
2500	360
3000	410
3500	460



8 Maintenance



- ▶ The visual parts must be cleaned at least once a year.
- ▶ Do not use aggressive cleaning agents or chemicals.

9 Fault messages and troubleshooting

9.1 Fault messages

Effect	LED display	Cause	Elimination
Correct operation	Flashes green slowly.	Signal saturation (lookback)	<ul style="list-style-type: none"> ▶ Remove strongly reflecting objects from the detection area. ▶ Reduce AIR: Filter. ▶ Reduce the area depth angle for the AIR area.
	Flashes yellow and green.	Service mode is enabled.	▶ Change to operating mode. To do this, press the function switch until the LED display goes out.
The door does not open when a person enters the detection area.	None	Wrong supply voltage	▶ Set to nominal voltage.
		Wrong cabling or connection fault	▶ Check cables and connectors.
	Unsteady	Wrong detection area positioning	▶ Check adaptations 1 and 2.
		Sensitivity too low	▶ Set higher Radar sensitivity.
		Short presence timer	▶ Increase presence timer.
		Soiled detection window	▶ Wipe the detection window using a damp cloth. Do not use cleaning agents or solvents.
Correct	Wrong cabling or connection fault	▶ Check cables and connectors.	



Effect	LED display	Cause	Elimination
Door opens even though there is no-one in the detection area (ghost effect).	Un-steady	Moving or light-emitting objects in the detection area	▶ Remove the objects.
		The detection area overlaps with that of another sensor.	▶ Check DIP switches 5 and 6.
		Drop of water on the detection window	▶ Use weather hood (available separately). ▶ Wipe the detection window using a damp cloth. Do not use cleaning agents or solvents. ▶ Install in a dry place.
		Detection area overlaps with door/head plate.	▶ Adjust detection area to "Low" (outside).
	Sensitivity too high	▶ Set lower AIR: Filter.	
	Correct	Wrong DIP switch setting	▶ Check DIP switches 7 and 8.

Effect	LED display	Cause	Elimination
Door remains open.	Correct	Detection area suddenly changed	<ul style="list-style-type: none"> ▶ Check DIP switches 1 to 4. ▶ If the problem persists, reset the sensor completely (switch the power off and on again).
		Wrong cabling or connection fault	▶ Check cables and connectors.
	Yellow	Installation mode is set to "ON".	▶ Set DIP switch 16 to "OFF".
Flashes green quickly.	Flashes green quickly.	Sensitivity too low	▶ Set higher sensitivity.
		Soiled detection window	▶ Wipe the detection window using a damp cloth. Do not use cleaning agents or solvents.
	Sensor fault	▶ Contact an installer or service engineer.	
Flashes green slowly.	Flashes green slowly.	Signal saturation (1 st or 2 nd row)	<ul style="list-style-type: none"> ▶ Remove highly reflective objects from detection area ▶ Lower AIR: Filter. ▶ Change range depth angle for the AIR range.
		Detection area overlaps with door/head plate.	▶ Adjust detection area to "Low" (outside).
Flashes red and green slowly.	Flashes red and green slowly.	Unconfirmed setting	▶ Confirm changes to DIP switches and/or potentiometer settings by pressing the function switch for 2 s (until the LED goes out).

9.2 LED-display table

Status	LED display colour	← 1000 ms	→ 1000 ms
Set-up	Flashes yellow		
Stand-by (installation mode)	Yellow		
Stand-by (service mode)	Flashes yellow and green		
Stand-by (operating mode)	Green		
1 st row detection	Flashes red		
2 nd row detection	Red		
Communication test output	Goes out for 500 ms		
Confirm changes	Flashes red and green		
Signal saturation	Flashes green slowly		
Sensor failure/AIR: Filter too low	Flashes green quickly		

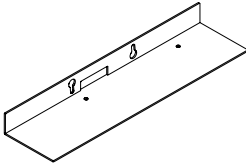
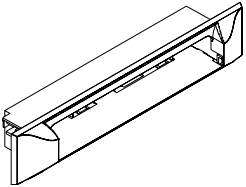
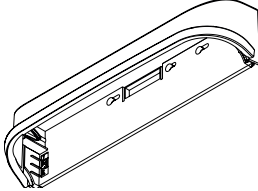
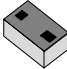
10 Technical data

Power supply:	12 – 24 V AC \pm 10 % (50/60 Hz) 12 – 30 V DC \pm 10 % (protected against reverse polarity)
Power consumption:	< 1 W (< 2 VA with AC)
Installation height:	2.0 – 3.5 m
Noise level:	< 70 dBA
Temperature range:	-20 – +55 °C < 80 % (non condensing)
Protection rating:	IP54 according to EN 60529
Applicable directives:	MD 2006/42/EC, RoHS 2 2011/65/EU Category and Performance Level: – AIR-range: Cat. 2, PL d ESPE: Type 2
Detection mode:	Presence  Typical response time: < 300 ms
Technology:	Active infrared reflection
Depth angle adjustment:	AIR-area: -6 – +6°
Output:	Relay: 5 – 50 V 0.3 A max.
Test input:	Opto-coupler (protected against reverse polarity) Voltage: 5 – 30 V DC Current: 6 mA max. (30 V DC)
TÜV type-tested:	 EC type approval certificate number 44 205 13099214



Only for EU countries: In compliance with the European Directive 2012/19/EU concerning waste electrical and electronic equipment (WEEE)

11 Accessories/spare parts

		Material no.
Ceiling bracket		160286
Ceiling installation kit		160288
Weather hood		160287
Spot finder		112321
Retrofit Adaptor	GC 333/GC 339 to GC 341	204529
	GC 341 6 pole to 10 pole	204531

Germany

GEZE GmbH
Niederlassung Süd-West
Tel. +49 (0) 7152 203 594
E-Mail: leonberg.de@geze.com

GEZE GmbH
Niederlassung Süd-Ost
Tel. +49 (0) 7152 203 6440
E-Mail: muenchen.de@geze.com

GEZE GmbH
Niederlassung Ost
Tel. +49 (0) 7152 203 6840
E-Mail: berlin.de@geze.com

GEZE GmbH
Niederlassung Mitte/Luxemburg
Tel. +49 (0) 7152 203 6888
E-Mail: frankfurt.de@geze.com

GEZE GmbH
Niederlassung West
Tel. +49 (0) 7152 203 6770
E-Mail: duesseldorf.de@geze.com

GEZE GmbH
Niederlassung Nord
Tel. +49 (0) 7152 203 6600
E-Mail: hamburg.de@geze.com

GEZE Service GmbH
Tel. +49 (0) 1802 923392
E-Mail: service-info.de@geze.com

Austria

GEZE Austria
E-Mail: austria.at@geze.com
www.geze.at

Baltic States –

Lithuania / Latvia / Estonia
E-Mail: baltic-states@geze.com

Benelux

GEZE Benelux B.V.
E-Mail: benelux.nl@geze.com
www.geze.be
www.geze.nl

Bulgaria

GEZE Bulgaria - Trade
E-Mail: office-bulgaria@geze.com
www.geze.bg

China

GEZE Industries (Tianjin) Co., Ltd.
E-Mail: chinasales@geze.com.cn
www.geze.com.cn

GEZE Industries (Tianjin) Co., Ltd.
Branch Office Shanghai
E-Mail: chinasales@geze.com.cn
www.geze.com.cn

GEZE Industries (Tianjin) Co., Ltd.
Branch Office Guangzhou
E-Mail: chinasales@geze.com.cn
www.geze.com.cn

GEZE Industries (Tianjin) Co., Ltd.
Branch Office Beijing
E-Mail: chinasales@geze.com.cn
www.geze.com.cn

France

GEZE France S.A.R.L.
E-Mail: france.fr@geze.com
www.geze.fr

Hungary

GEZE Hungary Kft.
E-Mail: office-hungary@geze.com
www.geze.hu

Iberia

GEZE Iberia S.R.L.
E-Mail: info.es@geze.com
www.geze.es

India

GEZE India Private Ltd.
E-Mail: office-india@geze.com
www.geze.in

Italy

GEZE Italia S.r.l. Unipersonale
E-Mail: italia.it@geze.com
www.geze.it

GEZE Engineering Roma S.r.l.
E-Mail: italia.it@geze.com
www.geze.it

Korea

GEZE Korea Ltd.
E-Mail: info.kr@geze.com
www.geze.com

Poland

GEZE Polska Sp.z o.o.
E-Mail: geze.pl@geze.com
www.geze.pl

Romania

GEZE Romania S.R.L.
E-Mail: office-romania@geze.com
www.geze.ro

Russia

OOO GEZE RUS
E-Mail: office-russia@geze.com
www.geze.ru

Scandinavia – Sweden

GEZE Scandinavia AB
E-Mail: sverige.se@geze.com
www.geze.se

Scandinavia – Norway

GEZE Scandinavia AB avd. Norge
E-Mail: norge.se@geze.com
www.geze.no

Scandinavia – Denmark

GEZE Danmark
E-Mail: danmark.se@geze.com
www.geze.dk

Singapore

GEZE (Asia Pacific) Pte, Ltd.
E-Mail: gezesea@geze.com.sg
www.geze.com

South Africa

GEZE South Africa (Pty) Ltd.
E-Mail: info@gezesa.co.za
www.geze.co.za

Switzerland

GEZE Schweiz AG
E-Mail: schweiz.ch@geze.com
www.geze.ch

Turkey

GEZE Kapı ve Pencere Sistemleri
E-Mail: office-turkey@geze.com
www.geze.com

Ukraine

LLC GEZE Ukraine
E-Mail: office-ukraine@geze.com
www.geze.ua

United Arab Emirates/GCC

GEZE Middle East
E-Mail: gezeme@geze.com
www.geze.ae

United Kingdom

GEZE UK Ltd.
E-Mail: info.uk@geze.com
www.geze.com

GEZE GmbH

Reinhold-Vöster-Straße 21–29
71229 Leonberg
Germany

Tel.: 0049 7152 203 0
Fax: 0049 7152 203 310
www.geze.com

