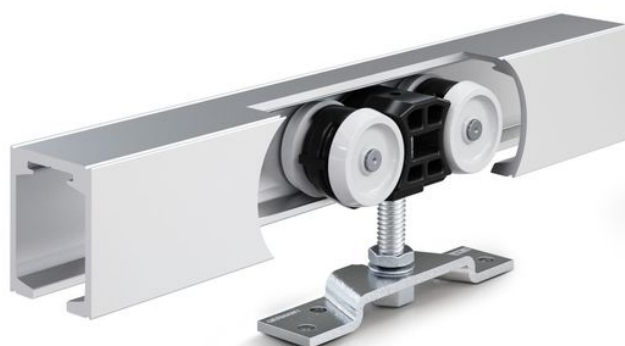


Product data sheet

Perlan 140 wood wall installation



Sliding door fitting system for timber, plastic, or metal doors
with a leaf weight of 140 kg and wall installation

AREAS OF APPLICATION

- Frequently used interior sliding doors
- Living, office, and conference areas as well as hotels
- Installation of fittings in all visible areas
- Single and multiple-leaf sliding doors
- Installation in front of the wall

PRODUCT FEATURES

- Sliding door fitting for leaf weights of up to 140 kg
- For leaves made of wood, plastic, or metal
- With damping on one or both sides for doors with up to 80 kg leaf weight, so that the door is quietly slowed down and moved into the end position
- Adjustable wall brackets balance out uneven masonry and allow for a freely selectable clearance from the wall
- Precision ball bearings in the roller carriages offer very smooth sliding action
- Tested in accordance with DIN EN 1527 over 100,000 test cycles for durability
- Retractable suspension plates allow for the door to be installed with a small clearance between the track and the upper edge of the door

TECHNICAL DATA

Productname	Perlan 140 wood wall installation
-------------	-----------------------------------

PART

PERLAN 140 SET FOR TIMBER LEAVES

Sliding door fitting for wall installation and timber leaves



Designation	Description	Ident-No.	Colour	Leaf width (min.)	Leaf width (max.)
Perlan 140 set for timber leaves	For wall installation with suspension plate and standard wall bracket, up to 140 kg leaf weight	119338	EV1	500 mm	1040 mm
Perlan 140 set for timber leaves	For wall installation with suspension plate and standard wall bracket, up to 140 kg leaf weight	119340	EV1	500 mm	1440 mm
Perlan 140 set for timber leaves	For wall installation with suspension plate and standard wall bracket, up to 140 kg leaf weight	119351	EV1	500 mm	1640 mm
Perlan 140 set for timber leaves	For wall installation with suspension plate and standard wall bracket, up to 140 kg leaf weight	119339	EV1	500 mm	1240 mm
Perlan 140 set for timber leaves	For wall installation with suspension plate and standard wall bracket, up to 140 kg leaf weight	119337	EV1	500 mm	840 mm

Perlan 140 wood wall installation



PERLAN 140 SET FOR TIMBER LEAVES

Sliding door fitting for wall installation and timber leaves



Designation	Description	Ident-No.	Colour	Leaf width (min.)	Leaf width (max.)
Perlan 140 set for timber leaves	For wall installation with suspension plate, standard wall bracket and Perlan SoftStop, up to 80 kg leaf weight. Perlan SoftStop one-sided, for track 2450 mm two-sided.	134892	EV1	860 mm	1240 mm
Perlan 140 set for timber leaves	For wall installation with suspension plate, standard wall bracket and Perlan SoftStop, up to 80 kg leaf weight. Perlan SoftStop one-sided, for track 2450 mm two-sided.	134891	EV1	535 mm	1000 mm

ACCESSORIES

CONCEALED SUSPENSION PROFILE SET

For milling into the wooden leaf



Designation	Description	Ident-No.
Concealed suspension profile set	2 pieces, for milling into the timber leaf, including suspension bolts and flat open-ended spanner for vertical adjustment	138015

END STOP WITH ADJUSTABLE HOLD-OPEN SPRING

Adjustable end stop for Perlan sliding door fitting



Designation	Ident-No.
End stop with adjustable hold-open spring	069274

Perlan 140 wood wall installation



HOLD-OPEN SPRING

Hold-open spring for Perlan 140 end stop



Designation	Ident-No.
Hold-open spring	064242

DOOR STOP

End stop for sliding leaves



Designation	Ident-No.
Door stop	000339
Door stop	000342

HEIGHT COMPENSATION MECHANISM / CEILING DISTANCE SET, WITH VARIABLE ADJUSTMENT

Height compensation with variable adjustment for ceiling installation of tracks



Designation	Description	Ident-No.
Height compensation mechanism / ceiling distance set, with variable adjustment	6 pieces, height compensation mechanism with variable adjustment from 13 mm to 18 mm. For use for ceiling mounting using clip-on cover 100/145 as well as for general use on uneven ceilings	138099

Perlan 140 wood wall installation



ALL-GLASS SYSTEM STAINLESS STEEL SINGLE POINT FIXING SET

Stainless steel single point fixing for toughened safety glass panes



Designation	Description	Ident-No.	Colour	Glass thickness
All-glass system stainless steel single point fixing set	2 pieces, brushed, for wooden leaves and glass leaves 8-12 mm, including 4 Rampa sleeves (wood) and installation material for glass	127961	Stainless steel	8 - 12 mm

PERLAN SOFTSTOP SET, MEDIUM VERSION, DAMPED ON ONE SIDE, UP TO 80 KG

Perlan SoftStop damping on one side for leaf weights up to 80 kg and leaf widths of 900 up to 1290 mm



Designation	Description	Ident-No.	Leaf width (min.)	Leaf width (max.)
Perlan SoftStop set, medium, one side	The set includes: 2 x roller carriage with damping unit on one side, 2 x end stop, 1 x trigger with fixing screw, 2 x standard suspension plate	128877	900 mm	1290 mm

PERLAN SOFTSTOP SET, LONG VERSION, DAMPED ON BOTH SIDES, UP TO 80 KG

Perlan SoftStop damping on both sides for leaf weights up to 80 kg



Designation	Description	Ident-No.	Leaf width (min.)	Leaf width (max.)
Perlan SoftStop set, long, both sides	The set includes: 2 x roller carriage with damping unit on both sides, 2 x end stop, 2 x trigger with fixing screws, 2 x standard suspension plate	128891	1290 mm	1700 mm

Perlan 140 wood wall installation



SET PERLAN SOFTSTOPDUO, DAMPED ON BOTH SIDES

Perlan SoftStopDuo with damping on both sides up to 80 kg leaf weight



Designation	Description	Ident-No.	Leaf width (min.)	Leaf width (max.)
Perlan SoftStopDuo set, damped on both sides, up to 80 kg	The set includes: 2 x roller carriage with damping unit on both sides, 2 x end stop, 2 x trigger with fixing screws, 2 x standard suspension plate	150071	750 mm	1290 mm

DOOR PULL HANDLE, CONFIGURED *

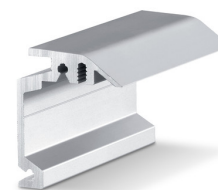
Push bar – round design for installation on glass leaves



Designation	Ident-No.	Colour
Door pull handle, configured *	127616	Stainless steel

WALL BRACKET CONCEALED PERLAN

Wall bracket for concealed wall installation of tracks



Designation	Description	Ident-No.	Colour
Wall bracket concealed Perlan	bespoke, for use with up to 43 mm leaf thickness	130449	Stainless steel optic
Wall bracket concealed Perlan	bespoke, for use with up to 43 mm leaf thickness	130443	EV1

Perlan 140 wood wall installation



PERLAN SOFTSTOP SET, SHORT VERSION, DAMPED ON ONE SIDE, UP TO 80 KG

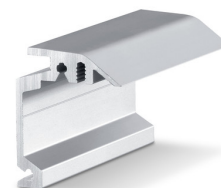
Perlan SoftStop damping on one side for leaf weights up to 80 kg and leaf widths of 575 to 900 mm



Designation	Description	Ident-No.	Leaf width (min.)	Leaf width (max.)
Perlan SoftStop set, short, one side	The set includes: 2 x roller carriage with damping unit on one side, 2 x end stop, 1 x trigger with fixing screw, 2 x standard suspension plate	128876	575 mm	900 mm

WALL BRACKET CONCEALED PERLAN

Wall bracket for concealed wall installation of tracks



Designation	Description	Ident-No.	Colour	Type of installation
Wall bracket concealed Perlan	For use up with to 43 mm leaf thickness	130445	Stainless steel optic	Wall
Wall bracket concealed Perlan	For use up with to 43 mm leaf thickness	130444	Stainless steel optic	Wall
Wall bracket concealed Perlan	For use up with to 43 mm leaf thickness	130447	Stainless steel optic	Wall
Wall bracket concealed Perlan	For use up with to 43 mm leaf thickness	130439	EV1	Wall
Wall bracket concealed Perlan	For use up with to 43 mm leaf thickness	130440	EV1	Wall
Wall bracket concealed Perlan	For use up with to 43 mm leaf thickness	130446	Stainless steel optic	Wall
Wall bracket concealed Perlan	For use up with to 43 mm leaf thickness	130435	EV1	Wall
Wall bracket concealed Perlan	For use up with to 43 mm leaf thickness	130436	EV1	Wall
Wall bracket concealed Perlan	For use up with to 43 mm leaf thickness	130438	EV1	Wall

COMPLETE CLIP-ON COVER SET 100

Clip-on cover for covering Perlan door fitting systems



Designation	Description	Ident-No.	Type of installation
Complete clip-on cover set 100	for wall and ceiling mounting, continuous cover, bespoke configuration	138098	Wall, Ceiling

Perlan 140 wood wall installation



* The products designated above may vary in form, type, characteristics, function, or availability depending on the country. Please get in touch with your GEZE contact person if you have any questions.