

# Product data sheet

## Perlan AUT 2 wood



Automation for Perlan on doors with a leaf weight of up to  
120 kg

### AREAS OF APPLICATION

- Simple and cost-effective automation solution for the Perlan sliding door fitting system
- Perlan sliding door fitting
- Shading systems and walk-in wardrobes
- Single and multi-leaf sliding panel
- Connection to building management systems possible
- Mounting to the wall and also to the ceiling via additional ceiling brackets
- Not for escape or rescue routes

### PRODUCT FEATURES

- Automation of Perlan sliding doors with a leaf weight of max. 120 kg
- Simple driver mounting above on the door leaf
- For leaves made of wood, plastic, or metal
- Simple installation of the belt drive beneath the Perlan track
- Fast drive installation with only 2 screws at the end of the track

### TECHNICAL DATA

Productname	Perlan AUT 2 wood
-------------	-------------------

### PART

#### TRACK PERLAN 140

Track for sliding door fitting



Designation	Description	Ident-No.	Colour
Track Perlan 140	with countersunk drill holes (prepared for Perlan SoftStop)	142518	EV1
Track Perlan 140	with countersunk drill holes (prepared for Perlan SoftStop)	128660	EV1
Track Perlan 140	with countersunk drill holes (prepared for Perlan SoftStop)	128662	Stainless steel optic
Track Perlan 140	with countersunk drill holes (prepared for Perlan SoftStop)	135061	Stainless steel optic
Track Perlan 140	with countersunk drill holes (prepared for Perlan SoftStop)	135048	EV1
Track Perlan 140	with countersunk drill holes (prepared for Perlan SoftStop)	135050	Stainless steel optic
Track Perlan 140	with countersunk drill holes (prepared for Perlan SoftStop)	135049	Stainless steel optic

Designation	Description	Ident-No.	Colour
Track Perlan 140	with countersunk drill holes (prepared for Perlan SoftStop)	135047	EV1
Track Perlan 140	with countersunk drill holes (prepared for Perlan SoftStop)	142519	EV1
Track Perlan 140	with countersunk drill holes (prepared for Perlan SoftStop)	135046	EV1

## ACCESSORIES

### PERLAN AUT ADDITIONAL SWITCH (WITHOUT CONTROL UNIT)

Additional switch for controlling automatic sliding door fittings



Designation	Ident-No.
Perlan AUT additional switch (without control unit)	126181

### TOOTHED BELT PERLAN AUT-NT / AUT

Toothed drive belts for automatic sliding door fittings



Designation	Ident-No.
Toothed belt Perlan AUT-NT / AUT	141500

### CONCEALED SUSPENSION PROFILE SET

For milling into the wooden leaf



Designation	Description	Ident-No.
Concealed suspension profile set	2 pieces, for milling into the timber leaf, including suspension bolts and flat open-ended spanner for vertical adjustment	138015

### SPACER PROFILE 10 MM FOR CONCEALED WALL BRACKET PERLAN 43 MM

Spacer profile for wall installation for leaf thicknesses up to 43 mm



Designation	Description	Ident-No.	Colour
Spacer profile 10 mm for concealed wall bracket Perlan 43 mm	for use with "concealed wall bracket up to 43 mm", stackable up to 20 mm spaces	136679	EV1
Spacer profile 10 mm for concealed wall bracket Perlan 43 mm	for use with "concealed wall bracket up to 43 mm", stackable up to 20 mm spaces	136711	EV1
Spacer profile 10 mm for concealed wall bracket Perlan 43 mm	for use with "concealed wall bracket up to 43 mm", stackable up to 20 mm spaces	136712	EV1
Spacer profile 10 mm for concealed wall bracket Perlan 43 mm	bespoke configuration	136717	
Spacer profile 10 mm for concealed wall bracket Perlan 43 mm	for use with "concealed wall bracket up to 43 mm", stackable up to 20 mm spaces	136680	EV1
Spacer profile 10 mm for concealed wall bracket Perlan 43 mm	for use with "concealed wall bracket up to 43 mm", stackable up to 20 mm spaces	136716	Stainless steel optic
Spacer profile 10 mm for concealed wall bracket Perlan 43 mm	for use with "concealed wall bracket up to 43 mm", stackable up to 20 mm spaces	136714	Stainless steel optic
Spacer profile 10 mm for concealed wall bracket Perlan 43 mm	for use with "concealed wall bracket up to 43 mm", stackable up to 20 mm spaces	136715	Stainless steel optic
Spacer profile 10 mm for concealed wall bracket Perlan 43 mm	for use with "concealed wall bracket up to 43 mm", stackable up to 20 mm spaces	136713	Stainless steel optic

### DOOR STOP

End stop for sliding leaves



Designation	Ident-No.
Door stop	000339
Door stop	000342

### **BUFFER FOR CONTINUOUS FLOOR GUIDE \***

Buffer for continuous floor guides integrated in the floor



<b>Designation</b>	<b>Ident-No.</b>
Buffer for continuous floor guide	124655

### **HEIGHT COMPENSATION MECHANISM / CEILING DISTANCE SET, WITH VARIABLE ADJUSTMENT**

Height compensation with variable adjustment for ceiling installation of tracks



<b>Designation</b>	<b>Description</b>	<b>Ident-No.</b>
Height compensation mechanism / ceiling distance set, with variable adjustment	6 pieces, height compensation mechanism with variable adjustment from 13 mm to 18 mm. For use for ceiling mounting using clip-on cover 100/145 as well as for general use on uneven ceilings	138099

### **PERLAN AUT 2 CONTROL \***

Control unit for automatic sliding door fitting



<b>Designation</b>	<b>Ident-No.</b>
Perlan AUT 2 control	147757

### DOOR PULL HANDLE, CONFIGURED \*

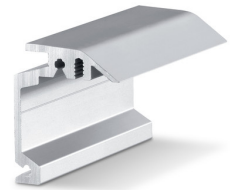
Push bar – round design for installation on glass leaves



Designation	Ident-No.	Colour
Door pull handle, configured *	127616	Stainless steel

### WALL BRACKET CONCEALED PERLAN

Wall bracket for concealed wall installation of tracks



Designation	Description	Ident-No.	Colour	Type of installation
Wall bracket concealed Perlan	For use up with to 43 mm leaf thickness	130445	Stainless steel optic	Wall
Wall bracket concealed Perlan	For use up with to 43 mm leaf thickness	130444	Stainless steel optic	Wall
Wall bracket concealed Perlan	For use up with to 43 mm leaf thickness	130447	Stainless steel optic	Wall
Wall bracket concealed Perlan	For use up with to 43 mm leaf thickness	130439	EV1	Wall
Wall bracket concealed Perlan	For use up with to 43 mm leaf thickness	130440	EV1	Wall
Wall bracket concealed Perlan	For use up with to 43 mm leaf thickness	130446	Stainless steel optic	Wall
Wall bracket concealed Perlan	For use up with to 43 mm leaf thickness	130435	EV1	Wall
Wall bracket concealed Perlan	For use up with to 43 mm leaf thickness	130436	EV1	Wall
Wall bracket concealed Perlan	For use up with to 43 mm leaf thickness	130438	EV1	Wall

### TOOTHED BELT PERLAN AUT-NT / AUT 2, BESPOKE

Toothed drive belts for automatic sliding door fittings



Designation	Ident-No.
Toothed belt Perlan AUT-NT / AUT 2, bespoke	141561



## COMPLETE CLIP-ON COVER SET 100

Clip-on cover for covering Perlan door fitting systems



Designation	Description	Ident-No.	Type of installation
Complete clip-on cover set 100	for wall and ceiling mounting, continuous cover, bespoke configuration	138098	Wall, Ceiling

\* The products designated above may vary in form, type, characteristics, function, or availability depending on the country. Please get in touch with your GEZE contact person if you have any questions.