

# Product data sheet

## E 250 NT



Compact design spindle drive with a wide area of application

### AREAS OF APPLICATION

- Smoke and heat extraction system and natural ventilation (24 V) for direct opening in the façade and roof area
- Inward- and outward opening windows with bottom-hung, top-hung and side-hung leaves as well as roof windows
- Can be used in the exhaust air and air intake
- E 250 NT for dry rooms only, Variant E 250 NT AB for protected outdoor area (e.g. canopy)
- Installation on wooden, PVC or metal windows



### PRODUCT FEATURES

- Continuously adjustable drive stroke and individual speeds for ventilation and smoke and heat extraction
- Synchronisation of max. four drives without external control unit
- Easily change the mode of operation (Solo and Syncro, master/slave) by means of DIP switch
- IQ windowdrive - intelligent drive control
- Tested as a natural smoke and heat exhaust ventilation device (SHEV) in accordance with EN 12101-2

### TECHNICAL DATA

Productname	E 250 NT
Opening speed RWA	5.7 mm, stroke 500: 9.5 mm/s
Opening speed ventilation	5 mm/s
Force of pressure (max.)	750 N
Holding force (max.)	2000 N
Compressive force	750 N
Tensile force	750 N
Voltage at operation	24 V ± 25 %
Operating voltage	24 V DC
Power consumption	1.3 A
Current consumption according to area of application	Ventilation (24 V): 0.9 A; RWA (18 V): 1.0 A Stroke 500: Ventilation (24 V): 1.1 A; RWA (18 V): 1.3 A
Power consumption	20 W
Duty rating	30 %
Connector cable length	2 m
Special length of connector cable	5 m, 7.5 m
Min. core cross section	0.75 mm <sup>2</sup>
Number of cores	4 cores
Service temperature	-5 - 70 °C
IP rating	IP65
protection rating	III
Synchronising function	Yes
Additional locking available	Yes
Type of additional locking mechanism	Locking drive
Type of stroke shortening	Synchronising unit, Factory setting
End position cut-off extended	electronic, via internal path sensor
End position cut-off retracted	electronic, via path and load
Overload cut-off	Yes
Complete opening within 60 s	yes, up to 500 mm stroke
SHEV tested	Yes
SHEV additional information	yes, up to 500 mm stroke
Number synchronisation drive units	4

KNX ability	Yes
Bottom-hung window INWARD-opening frame installation	Yes
Bottom-hung window INWARD-opening leaf installation	Yes
Bottom-hung window OUTWARD-opening frame installation	Yes
Side-hung window INWARD-opening frame installation	Yes
Side-hung window INWARD-opening door leaf installation	Yes
Side-hung window OUTWARD-opening frame installation	Yes
Top-hung window INWARD-opening frame installation	Yes
Top-hung window INWARD-opening leaf installation	Yes
Top-hung window OUTWARD-opening frame installation	Yes
OUTWARD-opening roof window	Yes

## NETWORKING



## VARIANTS / ORDER INFO

Designation	Description	Ident-No.	Colour	Stroke	Operating voltage
E 250 NT		146657	according to RAL	200 mm	24 V DC
E 250 NT - special version	Can be configured: Stroke, cable length, colour, variant E 250 NT AB	146676	according to RAL		24 V DC
E 250 NT		146659	white RAL 9016	230 mm	24 V DC
E 250 NT		146665	white RAL 9016	500 mm	24 V DC
E 250 NT		146672	according to RAL	750 mm	24 V DC
E 250 NT		146661	EV1	300 mm	24 V DC
E 250 NT		146674	white RAL 9016	1000 mm	24 V DC
E 250 NT		146671	white RAL 9016	750 mm	24 V DC
E 250 NT		146670	EV1	750 mm	24 V DC
E 250 NT		146673	EV1	1000 mm	24 V DC
E 250 NT		146651	according to RAL	100 mm	24 V DC
E 250 NT		146662	white RAL 9016	300 mm	24 V DC
E 250 NT		146664	EV1	500 mm	24 V DC
E 250 NT		146660	according to RAL	230 mm	24 V DC
E 250 NT		146653	white RAL 9016	150 mm	24 V DC
E 250 NT		146663	according to RAL	300 mm	24 V DC

Designation	Description	Ident-No.	Colour	Stroke	Operating voltage
E 250 NT		146655	EV1	200 mm	24 V DC
E 250 NT		146500	white RAL 9016	100 mm	24 V DC
E 250 NT		146658	EV1	230 mm	24 V DC
E 250 NT		146656	white RAL 9016	200 mm	24 V DC
E 250 NT		146675	according to RAL	1000 mm	24 V DC
E 250 NT		146652	EV1	150 mm	24 V DC
E 250 NT		146499	EV1	100 mm	24 V DC
E 250 NT		146654	according to RAL	150 mm	24 V DC
E 250 NT		146666	according to RAL	500 mm	24 V DC

**ACCESSORIES****ADAPTER FOR BRACKET E 250 NT NSK-S**

For installation of the E 250 NT spindle drive on Schüco roof windows



Designation	Description	Ident-No.	Colour
Adapter for bracket E 250 NT NSK-S	suitable for installation on the secondary closing edge of roof windows (Schüco AWS57 RO)	138370	EV1

**EYE BOLT E 250 NT DRM \***

For installation of the E 250 NT spindle drive



Designation	Description	Ident-No.	Colour
Eye bolt E 250 NT DRM *	suitable for installation on the secondary closing edge of roof windows	138368	silver-coloured

**ROTATING BRACKET E 250 NT NSK \***

For roof window installation of the E 250 NT spindle drive



Designation	Description	Ident-No.	Colour
Rotating bracket E 250 NT NSK *	with eye bolts and bracket mount / suitable for installation on the secondary closing edge of roof windows	138367	silver-coloured

**ROTATING BRACKET E 250 NT**

For roof window installation of the E 250 NT spindle drive



Designation	Description	Ident-No.	Colour
Rotating bracket E 250 NT	With eye bolts and leaf bracket	116114	according to RAL
Rotating bracket E 250 NT	With eye bolts and leaf bracket	116112	EV1
Rotating bracket E 250 NT	With eye bolts and leaf bracket	116113	white RAL 9016

**BRACKET INWARD OPENING E 250 NT / E 350 N**

For installation of the E 250 NT and E 350 N spindle drives



Designation	Description	Ident-No.	Colour
Bracket INWARD OPENING E 250 NT / E 350 N	With eye bolts and leaf bracket	027223	white RAL 9016
Bracket INWARD OPENING E 250 NT / E 350 N	With eye bolts and leaf bracket	027222	according to RAL
Bracket INWARD OPENING E 250 NT / E 350 N	With eye bolts and leaf bracket	027218	EV1

**STANDARD BRACKET E 250 NT / E 350 N**

For installation of the E 250 NT and E 350 N spindle drives



Designation	Description	Ident-No.	Colour
Standard bracket E 250 NT / E 350 N	With eye bolts and leaf bracket	020879	white RAL 9016
Standard bracket E 250 NT / E 350 N	With eye bolts and leaf bracket	019032	EV1
Standard bracket E 250 NT / E 350 N	With eye bolts and leaf bracket	020878	according to RAL

**BRACKET E 250 NT NSK**

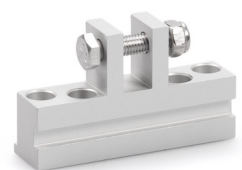
For roof window installation of the E 250 NT spindle drive



Designation	Ident-No.	Colour
Bracket E 250 NT NSK	138369	silver-coloured

**LEAF BRACKET E 1500 HSK HE \***

For roof window installation of the E 1500 N, E 250 NT and E 350 N spindle drives



Designation	Description	Ident-No.	Colour
Leaf bracket E 1500 HSK HE *	suitable for installation on the main closing edge of roof windows (Heroal 85 D), can also be used for E 250 NT / E 350 N	136190	EV1

**LEAF BRACKET E 1500 NSK A-HU \***

For roof window installation of the E 1500 N and E 250 NT spindle drives



Designation	Description	Ident-No.	Colour
Leaf bracket E 1500 NSK A-HU *	suitable for installation on the secondary closing edge of roof windows (Alcoa AA 100, Hueck VF 50/60), can also be used for E 250 NT	136189	EV1

**LEAF BRACKET E 1500 NSK HE \***

For roof window installation of the E 1500 N and E 250 NT spindle drives



Designation	Description	Ident-No.	Colour
Leaf bracket E 1500 NSK HE *	suitable for installation on the secondary closing edge of roof windows (Heroal 85 D), also suitable for E 250 NT	136188	EV1

**LEAF BRACKET E 1500 NSK W-HU \***

For roof window installation of the E 1500 N and E 250 NT spindle drives



Designation	Description	Ident-No.	Colour
Leaf bracket E 1500 NSK W-HU *	suitable for installation on the secondary closing edge of roof windows (Wicona WT 50/60, Hueck 85 E), can also be used for E 250 NT	136187	EV1

**LEAF BRACKET E 1500/ E 3000 NSK AP \***

For roof window installation of the E 1500 N, E 1500 S, E 3000 and E 250 NT spindle drives



Designation	Description	Ident-No.	Colour
Leaf bracket E 1500/ E 3000 NSK AP *	suitable for installation on the secondary closing edge of roof windows (Aluprof MB-SR50), can also be used for E 250 NT	140713	EV1

**SAFETY SCISSORS NO. 35**

For protection of bottom-hung leaves



Designation	Description	Ident-No.	Colour
Safety scissors no. 35	Fix pack available from stock (10 pieces), minimum leaf height 300mm	014499	Galvanised

**SAFETY SCISSORS NO. 60**

For protection of bottom-hung leaves



Designation	Description	Ident-No.	Colour
Safety scissors no. 60	Fix pack available from stock (10 pieces), minimum leaf height 700mm	133814	Galvanised



**SERVICE CASE IQ WINDOWDRIVE**

For commissioning and parameter setting of the window drives from the IQ windowdrive range



Designation	Description	Ident-No.	Colour	Supply voltage
Service case GEZE IQ windowdrive	for commissioning of 24 V window drives and for parameter setting of the IQ windowdrive drives in combination with the ST 220	142586	silver-coloured	100 - 240 V AC

**POWER SUPPLY HS**

24 V power supply for top hat rail mounting

**IQ GEAR \***

Interface for activation of the Slimchain, Powerchain and E 250 NT window drives in ventilation mode



Designation	Description	Ident-No.
IQ gear *	Interface for activation of the Slimchain, Powerchain and E 250 NT window drives in ventilation mode	151959

**IQ BOX SAFETY \***

Safety module for protecting hazardous areas of power-operated windows



Designation	Description	Ident-No.	Dimensions	Operating voltage	Type of installation
IQ box Safety *	Module for closing edge protection for window drives from the 24V IQ windowdrive series. One IQ box Safety is needed per window (also for Syncro applications and with locking drives). Top hat rail mounting (space needed 32 mm/2 TE)	187677	35 x 90 x 60 mm	24 V DC	Top hat rail mounting

# E 250 NT



## LEAF BRACKET E 1500/ E 3000 NSK S \*

For installation of the E 1500 N, E 1500 S, E 3000 and E 250 NT spindle drives



Designation	Description	Ident-No.	Colour
Leaf bracket E 1500/ E 3000 NSK S *	suitable for installation on the secondary closing edge of roof windows (Schüco AWS57 RO)	136186	EV1

## IQ BOX KNX

Interface module to connect the Slimchain, Powerchain, E 250 NT and F 1200+ window drives in the KNX building bus



Designation	Description	Ident-No.	Dimensions	Type of installation
IQ box KNX	Top hat rail variant (space requirement 18mm/1 TE). One IQ box KNX is required per window (also for Syncro applications and with locking drives).	164437	18 x 98 x 62 mm	Surface-mounted, Flush-mounted installation
IQ box KNX	Flush mounting variant. One IQ box KNX is needed per window (also for Syncro applications and with locking drives).	164443	50 x 45 x 19 mm	Surface-mounted, Flush-mounted installation

## GEZE POWER SUPPLY NT 1.5A-24V HS

24 V power supply for top hat rail mounting



Designation	Description	Ident-No.	Colour	Dimensions	Operating voltage
Power supply NT 1.5 A-24 V HS	Output voltage 24 V DC / W x H x D: 35 x 90 x 58 mm / Installation on top hat rail, 2 division units	151425	black	35 x 90 x 58 mm	230 V AC

**POWER SUPPLY NT 2.5 A-24 V HS \***

24 V power supply for top hat rail mounting



Designation	Description	Ident-No.	Colour	Dimensions	Operating voltage
Power supply NT 2.5 A-24 V HS *	Output voltage 24 V DC W x H x D: 52 x 90 x 58 mm Installation on top hat rail, 3 division units	151424	black	52 x 90 x 58 mm	230 V

**POWER SUPPLY NT 6.25 A-24 V HS \***

24 V power supply for top hat rail mounting



Designation	Description	Ident-No.	Colour	Dimensions	Operating voltage
Power supply NT 6.25 A-24 V HS *	Output voltage 24 V DC W x H x D: 72 x 95 x 66.5 mm Installation on top hat rail, 4 division units	192113	grey	72 x 95 x 66.5 mm	230 V DC +/- 10%

**ST 220**

Service terminal for the wireless and wired parameter setting of GEZE door and window products



Designation	Description	Ident-No.	Colour	Dimensions	Operating voltage
ST 220 service terminal	For parameter setting and diagnosis for TZ 320, TE 220, automatic door systems, drives from the IQ windowdrive series and THZ N4, THZ Comfort N4, battery operation with 4x AAA cells (not supplied by GEZE), plain text display on illuminated panel, keypad for operation / Parameter changes to GEZE systems may only be carried out by experts who have been authorised by the manufacturer	087261	blue	80 x 125 x 37 mm	24 V

**NT 2.5 A-24 V SM DIR POWER SUPPLY**

24 V power supply for surface-mounted installation with integrated direction control/polarity reversal



Designation	Description	Ident-No.	Colour	Dimensions	Operating voltage
NT 2.5 A-24 V SM DIR power supply	Output voltage 24 V DC W x H x D: 200 x 50 x 25 mm Surface-mounted installation With integrated direction control/polarity reversal	195293	grey	200 x 50 x 25 mm	230 V AC

\* The products designated above may vary in form, type, characteristics, function, or availability depending on the country. Please get in touch with your GEZE contact person if you have any questions.