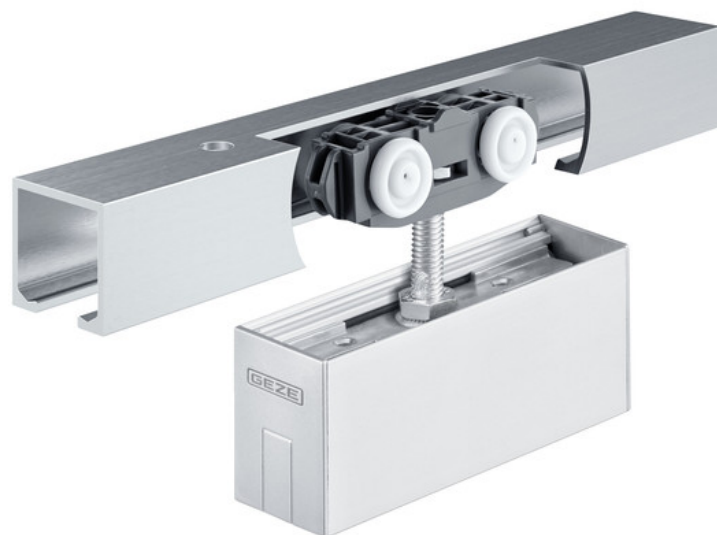


Product data sheet

Rollan 80 NT glass



Sliding door fitting system for glass doors with a leaf weight of 80 kg

AREAS OF APPLICATION

- For medium-weight interior sliding doors
- For passage doors or partition walls in living and office areas
- Lower space requirements for the door fitting means simple installation even in tight areas
- Single and multiple-leaf sliding doors
- Installation on the ceiling or wall



PRODUCT FEATURES

- For glass leaves with a 30 mm glass clamping plate
- With damping on one or both sides, for doors up to 40 kg leaf weight so that the door is stopped gently and pulled autonomously into the end position
- Uniform track for Rollan 40 and 80 allows for easy adjustment to changing applications
- Smooth-running roller carriages that can be set in motion with little force
- Easy adjustment of the space between the door leaf and track
- Retractable suspension plates allow for the door to be installed with a small clearance between the track and the upper edge of the door
- Tested for durability in accordance with DIN EN 1527 to 50,000 testing cycles
- Closed aluminium track protects against ingress of dust and dirt
- Simple, direct ceiling installation or bracket mounting on ceiling and wall
- Simple adjustment of the space between door leaf and rail / readjustment also possible when installed

TECHNICAL DATA

Productname	Rollan 80 NT glass
Leaf material	Toughened safety glass (ESG-H), Laminated safety glass (LSG from toughened safety glass)
Leaf weight (max.)	80 kg
Number of leaves	1-leaf
Leaf width (min.)	500 mm
Leaf width (max.)	1640 mm
Leaf height (max.)	3500 mm
Leaf thickness from	8 mm
Leaf thickness to	12 mm
Track geometry	straight
EN 1670 Corrosion resistance	1 (acc. to EN 1670: Class 0 = none defined, Class 1 = low, Class 2 medium, Class 3 = high, Class 4 = very high, Class 5 = extraordinary)
EN 1527 Continuous function	50,000 test cycles
Type of installation	Ceiling, Wall
DIN direction	left / right
Manual operation	Yes
Colour	Mill finish

PART

COVER PROFILE GLASS CLAMPING PLATE 30 MM *

For continuous covering with a length of 3 m



Designation	Description	Ident-No.	Colour
Cover profile glass clamping plate 30 mm	For continuous cover, 2 profiles	142372	Stainless steel optic
Cover profile glass clamping plate 30 mm	For continuous cover, 2 profiles	142371	EV1

COVER PROFILE GLASS CLAMPING PLATE 30 MM *

For continuous covering, cut to size



Designation	Description	Ident-No.	Colour
Cover profile glass clamping plate 30 mm	For continuous cover, bespoke	141697	according to RAL
Cover profile glass clamping plate 30 mm	For continuous cover, bespoke	141695	EV1
Cover profile glass clamping plate 30 mm	For continuous cover, bespoke	141696	Stainless steel optic

COVER PROFILE GLASS CLAMPING PLATE 30 MM

For individual covering of two glass clamping plates



Designation	Description	Ident-No.	Colour
Cover profile glass clamping plate 30 mm	For individual cover of 2 glass clamping plates	144032	EV1
Cover profile glass clamping plate 30 mm	For individual cover of 2 glass clamping plates	144033	Stainless steel optic

Rollan 80 NT glass



FLOOR GUIDE FOR GLASS LEAF

Floor guide with variable adjustment for glass thicknesses 8, 10 and 12 mm



Designation	Description	Ident-No.	Colour	Glass thickness
Floor guide for glass leaf (adjustable)	with variable adjustment for glass thickness 8-13.5 mm, with frieze band for noise reduction with structured glass surfaces, without attachment material	120417	silver-coloured	8 - 13.5 mm

LSG GLASS / METAL GLUE *

Glass metal glueing kit for connecting aluminium brackets with glass panes



Designation	Description	Ident-No.
LSG glass / metal glue 50 g *	for up to 30 sliding panels	133039

SET CAPS FOR GLASS CLAMPING PLATE 30 MM *

End cap for glass clamping plate 30, set comprising 2 pieces



Designation	Description	Ident-No.	Glass thickness
Set caps for glass clamping plate 30 mm	2 caps for installation on the outer leaf side for attachment of the continuous cover and side caps, necessary where the cover panel projects > 200 mm beyond the glass clamping plate	142373	8 - 12 mm

GLASS CLAMPING PLATE 30 MM SET, CONTINUOUSLY BLENDED

Glass clamping plate 30 for leaf weights up to 80 kg with continuous cover panels



Designation	Description	Ident-No.	Glass thickness
Glass clamping plate 30 mm set, continuously blended	Consisting of 2 glass clamping plates incl. suspension bolts, continuous bespoke cover and end caps, EV1 or stainless steel optic, up to 80 kg leaf weight, for 8-12 mm toughened safety glass	142368	8 - 12 mm

GLASS CLAMPING PLATE 30 MM SET, WITH COVERING

Glass clamping plate 30 mm including cover for leaf weights up to 80 kg



Designation	Description	Ident-No.	Colour	Glass thickness
Glass clamping plate 30 mm set, with covering	Consisting of 2 glass clamping plates incl. suspension bolts, individual cover profiles and end caps, up to 80 kg leaf weight, for 8-12 mm toughened safety glass	142366	Stainless steel optic	8 - 12 mm
Glass clamping plate 30 mm set, with covering	Consisting of 2 glass clamping plates incl. suspension bolts, individual cover profiles and end caps, up to 80 kg leaf weight, for 8-12 mm toughened safety glass	142367	according to RAL	8 - 12 mm
Glass clamping plate 30 mm set, with covering	Consisting of 2 glass clamping plates incl. suspension bolts, individual cover profiles and end caps, up to 80 kg leaf weight, for 8-12 mm toughened safety glass	142365	EV1	8 - 12 mm

GLASS CLAMPING PLATE 30 MM SET, WITHOUT COVER

Glass clamping plate 30 for leaf weights up to 80 kg without cover



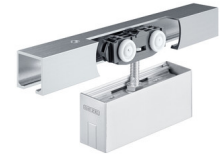
Designation	Description	Ident-No.	Glass thickness
Glass clamping plate 30 mm set, without cover	Consisting of 2 glass clamping plates incl. suspension bolts, up to 80 kg leaf weight, for 8-12 mm toughened safety glass	142364	8 - 12 mm

Rollan 80 NT glass



ROLLAN 80 NT COMPLETE SET *

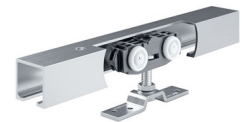
Sliding door fitting for glass leaves



Designation	Description	Ident-No.	Leaf width (min.)	Leaf width (max.)	Glass thickness
GEZE Rollan 80 NT complete set	Set for wall and ceiling installation with glass leaf, 30 mm glass clamping plate individually covered EV1, up to 80 kg leaf weight -ball bearing-	160423	500 mm	970 mm	8 - 10 mm

ROLLAN 80 NT COMPLETE SET

Sliding door fitting for timber leaves



Designation	Description	Ident-No.	Leaf width (min.)	Leaf width (max.)	Type of installation
GEZE Rollan 80 NT complete set	Set for wall and ceiling installation with timber leaf standard, up to 80 kg leaf weight -ball bearing-	160415	500 mm	1420 mm	Wall, Ceiling
GEZE Rollan 80 NT complete set	Set for wall and ceiling installation with timber leaf standard, up to 80 kg leaf weight -ball bearing-	160411	500 mm	840 mm	Wall, Ceiling
GEZE Rollan 80 NT complete set	Set for wall and ceiling installation with timber leaf standard, up to 80 kg leaf weight -ball bearing-	160413	500 mm	970 mm	Wall, Ceiling
GEZE Rollan 80 NT complete set	Set for wall and ceiling installation with timber leaf standard, up to 80 kg leaf weight -ball bearing-	160412	500 mm	920 mm	Wall, Ceiling
GEZE Rollan 80 NT complete set	Set for wall and ceiling installation with timber leaf standard, up to 80 kg leaf weight -ball bearing-	160414	500 mm	1190 mm	Wall, Ceiling
GEZE Rollan 80 NT complete set	Set for wall and ceiling installation with timber leaf standard, up to 80 kg leaf weight -ball bearing-	160416	500 mm	1640 mm	Wall, Ceiling

LSG GLUEING BRACKET SET *

Aluminium glueing bracket for LSG and glass clamping plate 30



Designation	Description	Ident-No.
LSG glueing bracket set *	for use with LSG in connection with glass clamping plate 30 mm, for 2 clamping plates, without adhesive	142386

END CAP SET, GLASS CLAMPING PLATE 30 MM *

End cap for glass clamping plate 30



Designation	Description	Ident-No.	Colour
End cap set, glass clamping plate 30 mm	for 2 glass clamping plates	142370	according to RAL
End cap set, glass clamping plate 30 mm	for 2 glass clamping plates	143346	EV1
End cap set, glass clamping plate 30 mm	for 2 glass clamping plates	142369	black
End cap set, glass clamping plate 30 mm	for 2 glass clamping plates	143347	Stainless steel optic

ACCESSORIES

CLIP-ON COVER 100 PROFILE

Cover panel profile for sliding door fitting with leaf weight up to 140 kg



Designation	Description	Ident-No.	Colour
Clip-on cover 100 profile	for wall and ceiling mounting, continuous cover	137606	EV1
Clip-on cover 100 profile	for wall and ceiling mounting, continuous cover	137604	EV1
Clip-on cover 100 profile	for wall and ceiling mounting, continuous cover	137603	EV1
Clip-on cover 100 profile	for wall and ceiling mounting, continuous cover	137608	Stainless steel optic
Clip-on cover 100 profile	for wall and ceiling mounting, continuous cover	137613	Stainless steel optic
Clip-on cover 100 profile	for wall and ceiling mounting, continuous cover, bespoke, choice of finishes	137614	
Clip-on cover 100 profile	for wall and ceiling mounting, continuous cover	137602	EV1

Designation	Description	Ident-No.	Colour
Clip-on cover 100 profile	for wall and ceiling mounting, continuous cover	137609	Stainless steel optic
Clip-on cover 100 profile	for wall and ceiling mounting, continuous cover	137611	Stainless steel optic

DOOR STOP

End stop for sliding leaves



Designation	Ident-No.
Door stop	000339
Door stop	000342

CLAMPING INSERT, GLASS CLAMPING PLATE 30 MM *

Clamping shim for glass thicknesses of 12.76 mm (1/2 inch)



Designation	Description	Ident-No.
Clamping insert, glass clamping plate 30 mm	for 2 glass clamping plates, for use with 12.7 mm (1/2 inch) toughened safety glass	142634

ROLLAN 80 NT SOFTSTOP SET, DAMPED ON ONE SIDE, UP TO 40 KG

Rollan SoftStop for damping on one side for leaf weights up to 40 kg



Designation	Description	Ident-No.
Rollan 80 NT SoftStop set, damped on one side, up to 40 kg	The set includes: 1 x damping unit, 1 x release device. Requirements for damping on both sides = 2 pieces.	160360

CLIP-ON COVER SET 100 SPACER BRACKET

Spacer bracket for clip-on cover 100



Designation	Description	Ident-No.
Clip-on cover set 100 spacer bracket	6 pieces, increase lateral distance of clip-on cover by 7.5 mm each, incl. 6 screws 4.5 x 10 mm T20. For use with Perlan AUT-NT as well as for leaf thicknesses from 30 mm	137754

CLIP-ON COVER SET 100 PLASTIC CLIP

Plastic clip for spacer bracket for clip-on cover 100



Designation	Description	Ident-No.
Clip-on cover set 100 plastic clip	10 pieces, for the direct attachment of the clip-on cover 100 on the track or the spacer brackets	137863

HEIGHT COMPENSATION MECHANISM / CEILING DISTANCE SET, WITH VARIABLE ADJUSTMENT

Height compensation with variable adjustment for ceiling installation of tracks



Designation	Description	Ident-No.
Height compensation mechanism / ceiling distance set, with variable adjustment	6 pieces, height compensation mechanism with variable adjustment from 13 mm to 18 mm. For use for ceiling mounting using clip-on cover 100/145 as well as for general use on uneven ceilings	138099

Rollan 80 NT glass



DOOR PULL HANDLE, CONFIGURED *

Push bar – round design for installation on glass leaves



Designation	Ident-No.	Colour
Door pull handle, configured *	127616	Stainless steel

END CAP SET CLIP-ON COVER 100 *

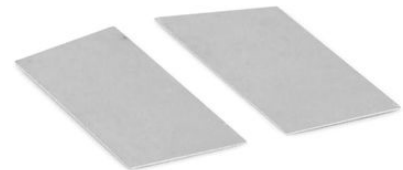
End cap for clip-on cover 100, slim version



Designation	Description	Ident-No.	Colour
End cap set clip-on cover 100 *	2 pieces, narrow version, for use without spacer bracket	137869	according to RAL
End cap set clip-on cover 100 *	2 pieces, narrow version, for use without spacer bracket	137867	Stainless steel optic
End cap set clip-on cover 100 *	2 pieces, narrow version, for use without spacer bracket	137865	EV1

END CAP SET CLIP-ON COVER 100 *

End cap for clip-on cover 100, large version



Designation	Description	Ident-No.	Colour
End cap set clip-on cover 100 *	2 pieces, wide version, for use with spacer bracket	137866	Stainless steel optic
End cap set clip-on cover 100 *	2 pieces, wide version, for use with spacer bracket	137864	EV1
End cap set clip-on cover 100 *	2 pieces, wide version, for use with spacer bracket	137868	according to RAL

* The products designated above may vary in form, type, characteristics, function, or availability depending on the country. Please get in touch with your GEZE contact person if you have any questions.